

# CONNECTOR MANUFACTURERS

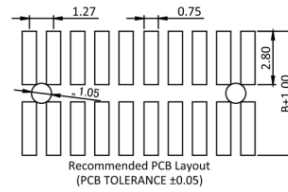
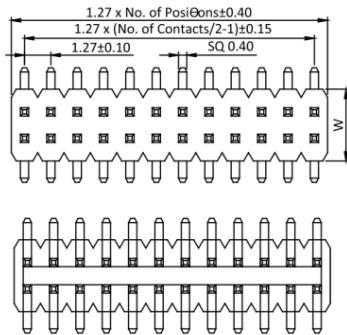
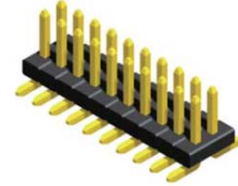
**TOPTEK®**  
HARDWARE ELECTRONIC MANUFACTURER

www.toptek-co.com

Pin Header 1.27mm SQ Pin=0.4mm 2 Row H=0.85mm SMT Type

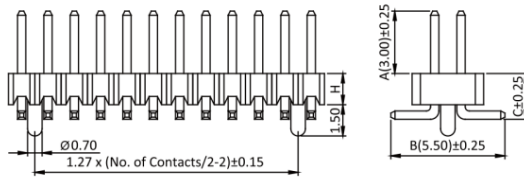
**Specifications**  
 Current Rate:1 AMP  
 Insulation Resistance:1000MΩ Min.  
 Contact Resistance:20mΩ Max.  
 Dielectric Voltage:500V AC for one minute  
 Operation Temperature:-40°C to +105°C

**Material**  
 Insulator:Hi-Temp. Thermoplastic, UL 94V-0  
 Terminal:Copper Alloy  
 Plating:Gold Plated



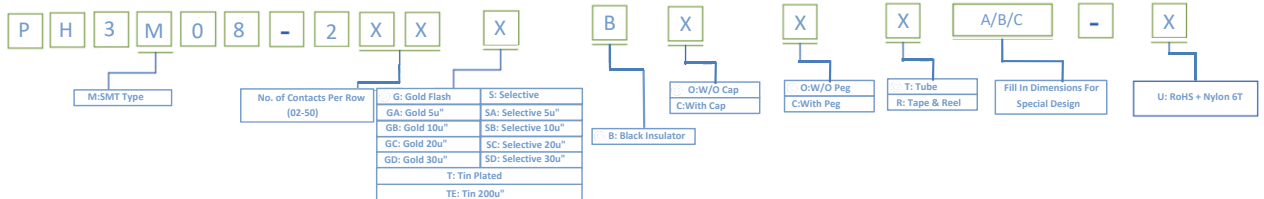
◎:Standard Dimensions

	Dimensions			
	W	A	B	C
H=0.85mm	3.40	3.00 or 4.00	5.50	1.30
H=1.00mm				1.50
H=1.50mm				2.00
H=1.70mm	3.00			2.20
H=2.00mm				2.50
H=2.50mm				3.00



Part No.:PH3M08-2XX-U

## ORDER INFORMATION



◎:Standard Recommend

Pin-Female Header 1.27 mm



ROHS